

# STRAND BRIDGE HOUSE

138-142 STRAND  
LONDON WC2

[STRANDBRIDGEHOUSE.CO.UK](http://STRANDBRIDGEHOUSE.CO.UK)



**2,504 Sq Ft Fitted Office Space to Let**



## DESCRIPTION

The available accommodation is located on the 2nd floor and is offered in a fitted condition. It benefits from a kitchenette, meeting rooms and a terrace.

## SPECIFICATION

- Fitted space
- Air conditioning
- Raised floors
- Manned reception
- Terrace
- Secure bike racks and shower
- Meeting room
- Kitchenette

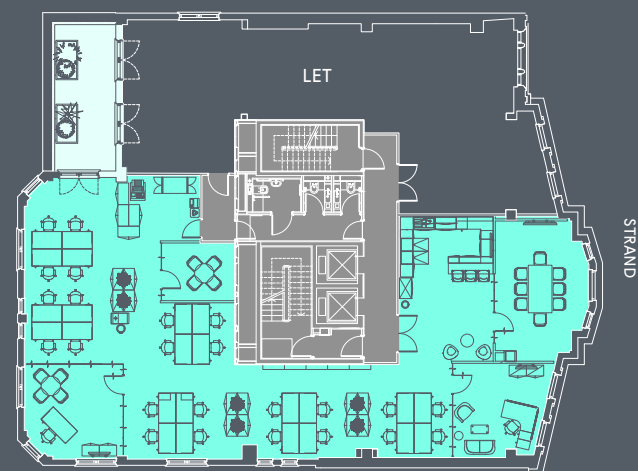


## LOCATION

The property is superbly located on the South Side of Strand, close to the top of Waterloo Bridge. It benefits from a lovely aspect over Aldwych at the front and Somerset House at the Rear. Charing Cross, Covent Garden, Temple, Holborn and Waterloo stations are all within close walking distance.

## 2ND FLOOR PLAN

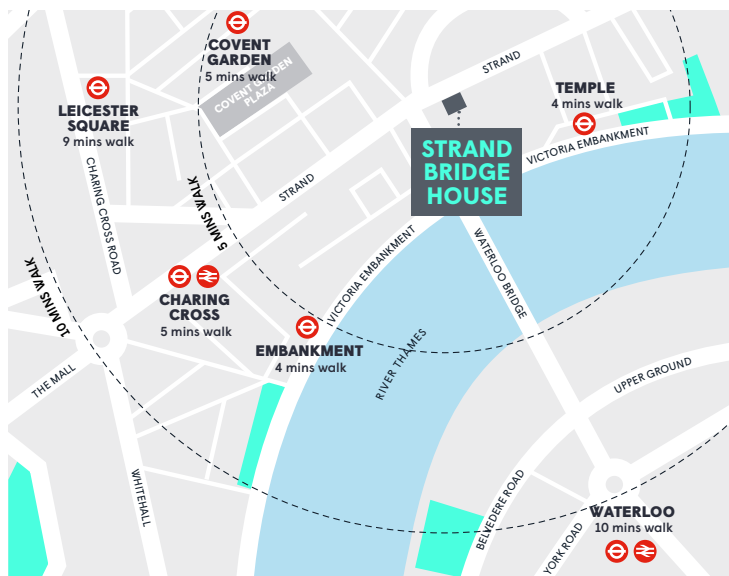
2,504 Sq Ft (232.6 Sq M)



Workstations	24	8 person meeting room	1
1 person offices	2	Kitchenette	1
4 person meeting room	1	<b>Occupancy total</b>	<b>26</b>

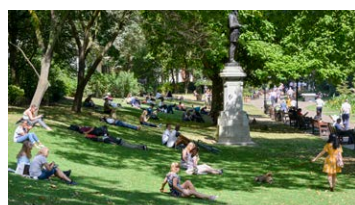
Plan not to scale, for indicative purposes only.

Office Terrace Core



## THE STRAND/ALDWYCH PROJECT

The Strand Aldwych project will transform this traffic dominated gyratory into a pedestrian-focused destination with strong links to the surrounding districts. The vision is for the area to become a global creative and cultural quarter which will be an international beacon for creativity, enterprise and learning. Finishing late 2022.



## TERMS

Upon application.

## VIEWINGS

Strictly through sole letting agents.

## MARK ANSTEY

020 7855 3552

manstey@farebrother.com

## FIONA CROWLEY

020 7855 3506

fcrowley@farebrother.com

**Farebrother**

Important Notice: Farebrother and their clients give notice that: 1. They are not authorised to make or give any representations or warranties in relation to the property either here or elsewhere, either on their own behalf or on behalf of their client or otherwise. They assume no responsibility for any statement that may be made in these particulars. These particulars do not form part of any offer or contract and must not be relied upon as statements or representations of fact. 2. Any areas, measurements or distances are approximate. The text, photographs and plans are for guidance only and are not necessarily comprehensive. It should not be assumed that the property has all necessary planning, building regulation or other consents and Farebrother have tested any services, equipment or facilities. Purchasers must satisfy themselves by inspection or otherwise. Crown Copyright - licence no. 100018190. Based on Ordnance Survey. Not to scale - for identification purposes only. May 2021.

Designed and produced by Cre8te - 020 3468 5760 - cre8te.london